

Official Statistics
Game Five
Mercy vs. Bullitt East

30th Girls?

FARNHAM DUDGEON CENTER • FRANKFORT, KENTUCKY • MARCH 20-23, 1997

OFFICIAL NCAA BASKETBALL BOX SCORE: *** FINAL ***

Date: 03-21-91 Site:Frankfort, Ky.

VISITORS (Last Name, First)

| NO. | BULLITT EAST | Tot FG | | 3-POINT | | FT | FTA | Rebounds | | | PF | TP | A | TO | BLK | S | TIME |
|------------------------------------|------------------|--------|-----|---------|-----|----|-----|----------|-----|-----|----|----|---|----|-----|---|-------|
| | | FG | FGA | FG | FGA | | | OFF | DEF | TOT | | | | | | | |
| 20 | Thomas, Rhonda | 5 | 11 | 0 | 0 | 5 | 7 | 3 | 5 | 8 | 3 | 15 | 0 | 2 | 1 | 3 | 28:35 |
| 35 | McKinley, Becky | 5 | 10 | 0 | 1 | 5 | 8 | 4 | 3 | 7 | 2 | 15 | 0 | 3 | 0 | 0 | 25:17 |
| 44 | Owen, Derhonda | 1 | 2 | 0 | 0 | 0 | 0 | 0 | 1 | 1 | 2 | 2 | 1 | 1 | 0 | 0 | 16:12 |
| 10 | Jutz, Bree | 1 | 7 | 0 | 3 | 0 | 0 | 2 | 2 | 4 | 4 | 2 | 2 | 5 | 0 | 2 | 31:50 |
| 23 | Reynolds, Kris. | 0 | 3 | 0 | 0 | 1 | 2 | 1 | 2 | 3 | 4 | 1 | 3 | 4 | 0 | 2 | 31:50 |
| 31 | Brown, Anita | 1 | 2 | 0 | 0 | 1 | 4 | 1 | 0 | 1 | 0 | 3 | 0 | 0 | 0 | 0 | 15:32 |
| 12 | Jarvis, Jennifer | 0 | 3 | 0 | 3 | 1 | 2 | 1 | 0 | 1 | 0 | 1 | 2 | 0 | 0 | 0 | 9:54 |
| 11 | Hardman, Kelly | 0 | 0 | 0 | 0 | 0 | 0 | 0 | 0 | 0 | 0 | 0 | 0 | 0 | 0 | 0 | 0:10 |
| 14 | Hardman, Kristy | 0 | 0 | 0 | 0 | 0 | 0 | 0 | 0 | 0 | 0 | 0 | 0 | 0 | 0 | 0 | 0:10 |
| 22 | Newkirk, Mary. | 0 | 1 | 0 | 0 | 0 | 0 | 0 | 0 | 0 | 0 | 0 | 0 | 0 | 0 | 0 | 0:10 |
| 33 | Lehring, Sarah | 0 | 0 | 0 | 0 | 0 | 0 | 0 | 0 | 0 | 0 | 0 | 0 | 0 | 0 | 0 | 0:10 |
| 34 | Robinson, Paige | 0 | 0 | 0 | 0 | 0 | 0 | 0 | 0 | 0 | 0 | 0 | 0 | 0 | 0 | 0 | 0:10 |
| TEAM REBOUNDS (INCLUDED IN TOTALS) | | | | | | | | 1 | 4 | 5 | | | | 1 | | | |
| TOTALS | | 13 | 39 | 0 | 7 | 13 | 23 | 13 | 17 | 30 | 15 | 39 | 8 | 16 | 1 | 7 | 160 |

TOTAL FG 1st HALF 1/6 16.7% 2nd HALF 12/33 36.4% GAME 13/39 33.3% DEADBALL
 3-POINT FG 1st HALF 0/0 0.0% 2nd HALF 0/7 0.0% GAME 0/7 0.0% REBOUNDS 5
 FREE THROWS 1st HALF 5/8 62.5% 2nd HALF 8/15 53.3% GAME 13/23 56.5%

HOME (Last Name, First)

| NO. | MERCY | Tot FG | | 3-POINT | | FT | FTA | Rebounds | | | PF | TP | A | TO | BLK | S | TIME |
|------------------------------------|-----------------|--------|-----|---------|-----|----|-----|----------|-----|-----|----|----|----|----|-----|---|-------|
| | | FG | FGA | FG | FGA | | | OFF | DEF | TOT | | | | | | | |
| 30 | Brickley, Amy | 6 | 9 | 0 | 0 | 0 | 0 | 1 | 6 | 7 | 3 | 12 | 3 | 3 | 0 | 1 | 31:48 |
| 31 | Roalofs, Katie | 4 | 6 | 1 | 1 | 4 | 4 | 1 | 2 | 3 | 4 | 13 | 2 | 1 | 0 | 1 | 29:44 |
| 55 | Stuckenberg, K. | 2 | 8 | 0 | 0 | 2 | 2 | 1 | 2 | 3 | 4 | 6 | 1 | 2 | 2 | 0 | 21:17 |
| 21 | Schuetter, Kris | 2 | 3 | 0 | 0 | 0 | 0 | 0 | 0 | 0 | 0 | 4 | 2 | 2 | 0 | 1 | 30:42 |
| 40 | Jansen, Chris. | 4 | 15 | 2 | 4 | 1 | 2 | 2 | 7 | 9 | 3 | 11 | 5 | 4 | 0 | 4 | 32:00 |
| 50 | Cave, Missy | 1 | 1 | 0 | 0 | 0 | 0 | 1 | 0 | 1 | 3 | 2 | 0 | 0 | 0 | 0 | 9:42 |
| 20 | Parker, Angie | 0 | 0 | 0 | 0 | 1 | 2 | 0 | 1 | 1 | 0 | 1 | 0 | 0 | 0 | 0 | 4:47 |
| TEAM REBOUNDS (INCLUDED IN TOTALS) | | | | | | | | 1 | 1 | 1 | | | | 1 | | | |
| TOTALS | | 19 | 42 | 3 | 5 | 8 | 10 | 6 | 19 | 25 | 17 | 49 | 13 | 12 | 2 | 7 | 160 |

TOTAL FG 1st HALF 5/12 41.7% 2nd HALF 14/30 46.7% GAME 19/42 45.2% DEADBALL
 3-POINT FG 1st HALF 3/4 75.0% 2nd HALF 0/1 0.0% GAME 3/5 60.0% REBOUNDS 1
 FREE THROWS 1st HALF 0/0 0.0% 2nd HALF 8/10 80.0% GAME 8/10 80.0%

OFFICIALS: Donald Gilmore, David Hale, J. Dyehouse-Alt

SCORE BY PERIODS

Technical: None

| | | | | | | |
|--------------|----|----|----|----|---|----|
| BULLITT EAST | 7 | 12 | 9 | 11 | = | 39 |
| MERCY | 13 | 12 | 12 | 12 | = | 49 |

Attendance: 3,680

COMMENTS: POINTS OFF TURNOVERS

SECOND CHANCE POINTS

BULLITT EAST 14 MERCY

16 BULLITT EAST

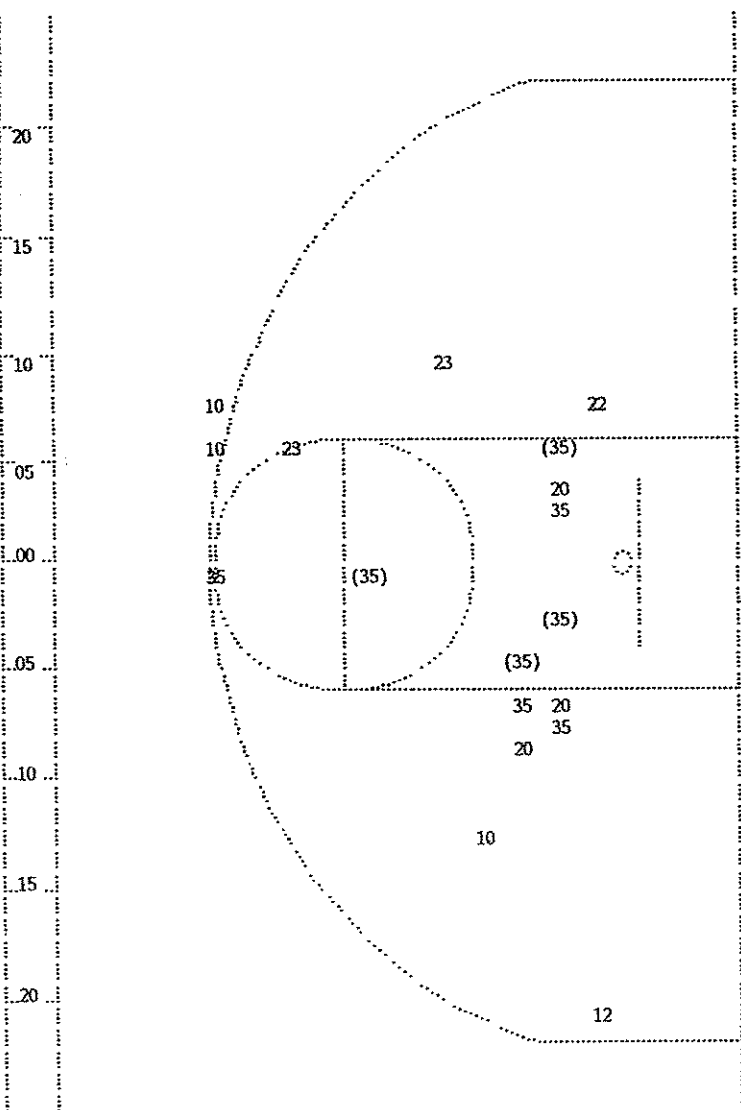
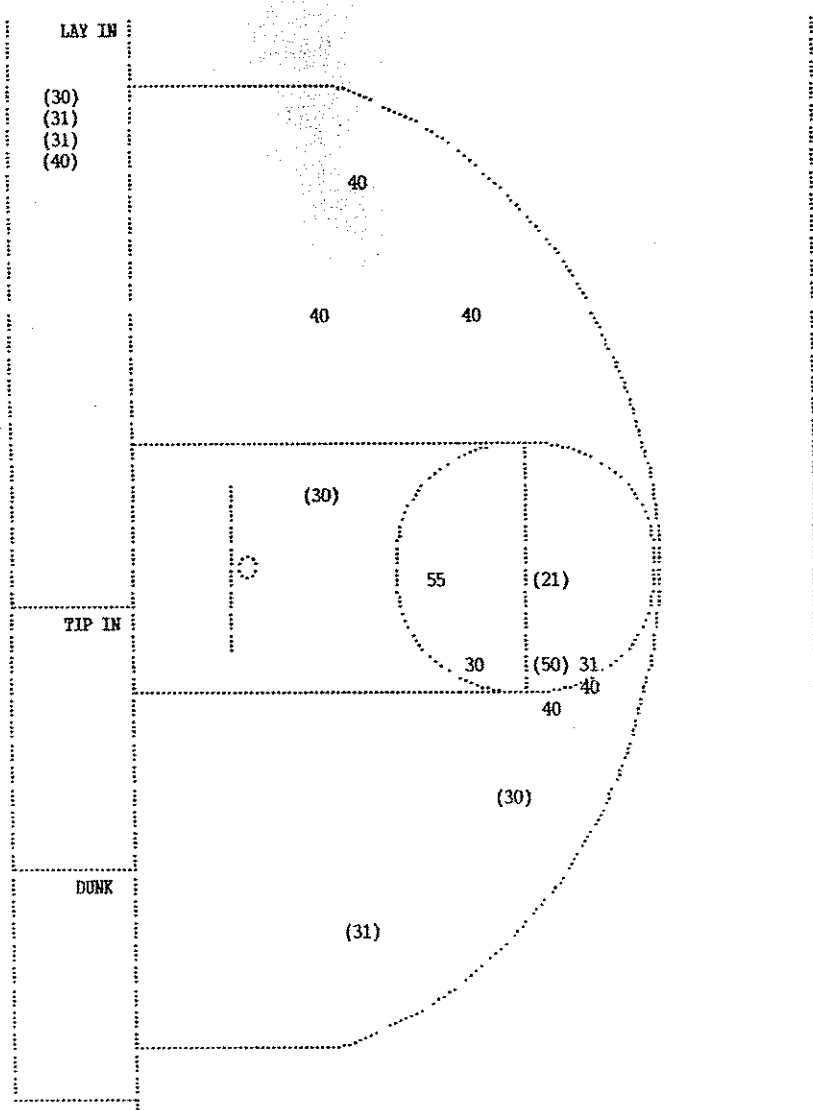
9 MERCY

| MERCY | | | | Time | Score | BULLITT EAST | Player | Team |
|-------|-------|-----|-------|--|---------|--------------|---|----------------------|
| 1-2 | 50.0% | 6-8 | 75.0% | Jansen, Chris. , 2 Free Throws missed 1st made 2nd | 4 :10.7 | *49-39 | | |
| | | | | | 4 :00.3 | | 8 ft Left Base Line Jump shot by Newkirk, Mary., missed | 0-1 00.0% 4-15 26.6% |
| D-4 | Tot-5 | D-7 | Tot-8 | Rebound by Jansen, Chris. | 4 :00.3 | | | |

FINAL III - A Product of L E X I C O N S P O R T S
 (C) Copyright Davies & Associates, Inc.
 All Rights Reserved

| Player | Team | MERCY | Time | Score | BULLITT EAST | Player | Team |
|------------------|-----------|---|-----------------|--------------------|---|--------|-----------------|
| Stuckenberg, K., | Brickley, | Amy,Jansen, Chris. ,Roalofs, Katie ,Schuetter, Kris | | | Thomas, Rhonda ,McKinley, Becky,Owen, Derhonda ,Jutz, Bree,Reynolds, Kris. | | |
| 1 | 1 | Ball to Jaguars Out-of-Bounds by Brickley, Amy | 4 7:50 | | | | |
| | | | 4 7:41 | 37-30* | 6 ft Left Side Bank by McKinley, Becky Assist by Jutz, Bree | 1-1 | 100% 1-1 100% |
| | | | 4 7:09 | | Foul on Thomas, Rhonda | 1 | 1 |
| 2-2 | 100% | 2-2 100% | 4 7:09 | *39-30 | | | |
| 1 | 2 | Roalofs, Katie , 2 Free Throws made both Bad Pass by Jansen, Chris. | 4 6:47 | | | | |
| | | | 4 6:46 | 39-32* | 3 ft Lane Turnaround by McKinley, Becky Assist by Owen, Derhonda | 2-2 | 100% 2-3 66.6% |
| | | | 4 5:46 | | Steal by Reynolds, Kris. | 1 | 2 |
| 2 | 3 | Dribbling Error on Jansen, Chris. | 4 5:45 | | | 1 | 1 |
| | | | 4 5:40 | 39-34* | Fast Break Layup by McKinley, Becky Assist by Reynolds, Kris. | 3-4 | 75.0% 3-5 60.0% |
| | | | | | | 1 | 3 |
| | | REB: 2 A: 0 BLK: 0 TO: 3 PF: 0 | 4 5:35 | | REB: 1 A: 3 BLK: 0 TO: 0 PF: 1 | | |
| | | S: 0 FT: 2-2 100% FG: 0-1 00.0% | No. 1 MERCY | T I M E - O U T | S: 1 FT: 0-0 00.0% FG: 3-5 60.0% | | |
| 1-1 | 100% | 1-2 50.0% | 4 5:23 | *41-34 | | | |
| 1 | 1 | 16 ft Left Side Jump shot by Roalofs, Katie Assist by Stuckenberg, K. | 4 5:07 | 41-36* | 6 ft Lane Driving by McKinley, Becky | 4-5 | 80.0% 4-6 66.6% |
| | | | 4 4:43 | *43-36 | | | |
| 1-1 | 100% | 2-3 66.6% | 4 4:18 | | | | |
| 1 | 2 | 14 ft Lane Jump shot by Schuetter, Kris Assist by Jansen, Chris. | 4 4:18 | | | | |
| 1 | 1 | Foul on Roalofs, Katie Sub In: Parker, Angie Out: Roalofs, Katie | 4 4:18 | 43-37* | McKinley, Becky, 2 Free Throws missed 1st made 2nd | 1-2 | 50.0% 1-2 50.0% |
| | | Sub In: Cave, Missy Out: Brickley, Amy | 4 3:39 | | | | |
| | | | 4 3:27 | | Foul on Thomas, Rhonda | 2 | 2 |
| | | | 4 3:27 | | Sub In: Jarvis,Jennifer Out: Owen, Derhonda | | |
| 1-2 | 50.0% | 3-4 75.0% | 4 3:27 | *44-37 | | | |
| 1 | 2 | Sub In: Brickley, Amy Out: Cave, Missy Parker, Angie, 2 Free Throws made 1st missed 2nd Foul on Stuckenberg, K. | 4 2:30 | | | | |
| | | | 4 2:30 | 44-38* | Thomas, Rhonda , 2 Free Throws missed 1st made 2nd | 1-2 | 50.0% 2-4 50.0% |
| | | | | | | | |
| | | REB: 5 A: 2 BLK: 0 TO: 3 PF: 2 | 4 2:30 | | REB: 5 A: 3 BLK: 1 TO: 0 PF: 2 | | |
| | | S: 0 FT: 3-4 75.0% FG: 2-6 33.3% | No. 2 MERCY | T I M E - O U T | S: 1 FT: 2-4 50.0% FG: 4-10 40.0% | | |
| | | | 4 2:16 | | Foul on Jutz, Bree | 1 | 3 |
| | | | 4 2:05 | | Steal by Reynolds, Kris. | 2 | 2 |
| 2 | 4 | Bad Pass by Brickley, Amy | 4 2:02 | | | | |
| 1 | 3 | Foul on Jansen, Chris. Sub In: Roalofs, Katie Out: Parker, Angie | 4 2:02 | | | | |
| | | | 4 2:02 | | | | |
| | | | 4 2:02 | 44-39* | Reynolds, Kris., 2 Free Throws made 1st missed 2nd | 1-2 | 50.0% 3-6 50.0% |
| | | | 4 1:31 | | Foul on Reynolds, Kris. | 1 | 4 |
| | | | | | | | |
| | | REB: 6 A: 2 BLK: 0 TO: 4 PF: 3 | 4 1:28 | | REB: 5 A: 3 BLK: 1 TO: 0 PF: 4 | | |
| | | S: 0 FT: 3-4 75.0% FG: 2-6 33.3% | T I M E - O U T | BULLITT EAST No. 1 | S: 2 FT: 3-6 50.0% FG: 4-10 40.0% | | |
| | | | 4 1:00 | | Foul on Thomas, Rhonda | 3 | 5 |
| | | | 4 :58.6 | | Foul on Jutz, Bree | 2 | 6 |
| 2-2 | 100% | 5-6 83.3% | 4 :58.6 | *46-39 | | | |
| 1 | 1 | Stuckenberg, K., 2 Free Throws made both Steal by Jansen, Chris. | 4 :41.6 | | | | |
| | | | 4 :39.1 | | Bad Pass by McKinley, Becky | 1 | 1 |
| 1-3 | 33.3% | 3-7 42.8% | 4 :37.1 | *48-39 | | | |
| | | Fast Break Layup by Jansen, Chris. | 4 :10.7 | | Foul on Reynolds, Kris. | 2 | 7 |
| | | | 4 :10.7 | | Sub In: Hardman, Kelly Out: Reynolds, Kris. | | |
| | | | 4 :10.7 | | Subs In: Hardman, Kristy, Newkirk, Mary., Lehring, Sarah , Robinson, Paige | | |
| | | | | | Out: Jutz, Bree, Jarvis,Jennifer, Thomas, Rhonda , | | |

| Player | Team | MERCY | Time | Score | BULLITT EAST | Player | Team |
|---|-------|---|--|--------------------|--|--|-----------|
| Brickley, Amy, Roalofs, Katie, Stuckenberg, K., Schuetter, Kris, Jansen, Chris. | | | Thomas, Rhonda, McKinley, Becky, Owen, Derhonda, Jutz, Bree, Reynolds, Kris. | | | | |
| 1 | 1 | Ball to Jaguars Foul on Roalofs, Katie | 3 7:43 | | | | |
| 1-1 | 100% | 1-2 50.0% | 16 ft Left Angle Jump shot by Brickley, Amy | 3 6:49 | 25-21* | 12 ft Lane Jump shot by McKinley, Becky | 1-1 100% |
| 1 | 1 | Assist by Roalofs, Katie | | | Assist by Reynolds, Kris. | 1-1 100% | 1 |
| 1-1 | 100% | 1-2 50.0% | 16 ft Left Angle Jump shot by Brickley, Amy | 3 6:25 | *27-21 | | |
| 1 | 1 | Assist by Roalofs, Katie | | | | | |
| 2-2 | 100% | 2-4 50.0% | Follow Layup by Brickley, Amy | 3 6:13 | | Out-of-Bounds by Owen, Derhonda | 1 |
| | | | | 3 5:56 | *29-21 | | |
| | | | | 3 5:31 | | Out-of-Bounds by Reynolds, Kris. | 1 |
| | | | | 3 5:31 | | | |
| | | REB: 1 A: 1 BLK: 0 TO: 0 PF: 1 | | | | REB: 1 A: 1 BLK: 0 TO: 2 PF: 0 | |
| | | S: 0 FT: 0-0 00.0% FG: 2-4 50.0% | T I M E - O U T | BULLITT EAST No. 1 | | S: 0 FT: 0-0 00.0% FG: 1-1 100% | |
| 2 | 2 | Foul on Roalofs, Katie | 3 5:12 | | | | |
| 1 | 1 | Other Roalofs, Katie | 3 5:12 | | | | |
| | | | 3 5:12 | | Sub In: Brown, Anita Out: Owen, Derhonda | | |
| | | | 3 4:38 | | Steal by Jutz, Bree | 1 | 1 |
| 1 | 2 | Bad Pass by Stuckenberg, K. | 3 4:36 | | | | |
| 1 | 3 | Foul on Brickley, Amy | 3 4:07 | | | | |
| 1-2 | 50.0% | 3-5 60.0% | Driving Layup by Roalofs, Katie | 3 4:07 | 29-22* | McKinley, Becky, 2 Free Throws made 1st missed 2nd | 1-2 50.0% |
| 1 | 2 | Assist by Schuetter, Kris | | | | | |
| 1 | 1 | Steal by Jansen, Chris. | 3 3:52 | *31-22 | | | |
| | | | 3 3:42 | | | | |
| | | | 3 3:39 | | Bad Pass by Reynolds, Kris. | 2 | 3 |
| | | | 3 3:39 | | Foul on Jutz, Bree | 1 | 1 |
| | | | 3 3:24 | | Steal by Jutz, Bree | 2 | 2 |
| 1 | 3 | Bad Pass by Schuetter, Kris | 3 3:23 | | | | |
| 1 | 4 | Foul on Stuckenberg, K. | 3 3:23 | | | | |
| | | Sub In: Cave, Missy Out: Stuckenberg, K. | 3 3:23 | | | | |
| | | | 3 3:20 | | Traveling Violation on McKinley, Becky | 1 | 4 |
| | | | 3 3:19 | | | | |
| | | REB: 3 A: 2 BLK: 0 TO: 3 PF: 4 | | | | REB: 1 A: 1 BLK: 0 TO: 4 PF: 1 | |
| | | S: 1 FT: 0-0 00.0% FG: 3-5 60.0% | T I M E - O U T | BULLITT EAST No. 2 | | S: 2 FT: 1-2 50.0% FG: 1-2 50.0% | |
| 2-3 | 66.6% | 4-6 66.6% | Driving Layup by Roalofs, Katie | 3 3:14 | *33-22 | | |
| 1 | 3 | Assist by Jansen, Chris. | | | | | |
| 1-1 | 100% | 5-7 71.4% | 15 ft Lane Jump shot by Cave, Missy | 3 2:31 | *35-22 | | |
| 1 | 4 | Assist by Brickley, Amy | | | | | |
| | | | 3 2:11 | 35-24* | Follow Layup by Thomas, Rhonda | 1-2 50.0% | 2-5 40.0% |
| | | | 3 2:02 | | Steal by Thomas, Rhonda | 1 | 3 |
| 1 | 4 | Bad Pass by Jansen, Chris. | 3 2:00 | | | | |
| 3 | 5 | Foul on Roalofs, Katie | 3 1:54 | | | | |
| | | | 3 1:45 | | Unforced Error Reynolds, Kris. | 3 | 5 |
| 2 | 6 | Foul on Brickley, Amy | 3 1:18 | | | | |
| | | | 3 1:18 | 35-26* | Thomas, Rhonda, 2 Free Throws made both | 2-2 100% | 3-4 75.0% |
| | | | 3 :24.5 | 35-28* | Driving Layup by Thomas, Rhonda | 2-3 66.6% | 3-7 42.8% |
| | | | | | Assist by Reynolds, Kris. | 2 | 2 |
| 3-3 | 100% | 6-10 60.0% | 4 ft Lane Turnaround by Brickley, Amy | 3 :10.6 | *37-28 | | |
| 2 | 5 | Assist by Schuetter, Kris | | | | | |



| MERCY | | | | | |
|-----------------|--------|----------|-----------------|------------|--------|
| Player | | | Player | | Player |
| 30 - Brickley, | 3 / 4 | 75.0% | 50 - Cave, Miss | 1 / 1 | 100.0% |
| 31 - Roalofs, K | 3 / 4 | 75.0% | | | |
| 55 - Stuckenber | 0 / 1 | 0.0% | | | |
| 21 - Schuetter, | 1 / 1 | 100.0% | | | |
| 40 - Jansen, Ch | 1 / 6 | 16.6% | | | |
| Layups | 1-9 Ft | 10-15 Ft | Over 15 Ft | 3 Pointers | Total |
| 4 / 4 | 1 / 2 | 2 / 5 | 2 / 6 | 9 / 17 | |
| 100.0% | 50.0% | 40.0% | 33.3% | | 52.9% |

| BULLITT EAST | | | | | |
|------------------|--------|----------|-----------------|------------|--------|
| Player | | | Player | | Player |
| 20 - Thomas, Rh | 2 / 5 | 40.0% | 22 - Newkirk, M | 0 / 1 | 0.0% |
| 35 - McKinley, | 5 / 10 | 50.0% | | | |
| 10 - Jutz, Bree | 0 / 3 | 0.0% | | | |
| 23 - Reynolds, | 0 / 2 | 0.0% | | | |
| 12 - Jarvis, Jen | 0 / 1 | 0.0% | | | |
| Layups | 1-9 Ft | 10-15 Ft | Over 15 Ft | 3 Pointers | Total |
| 3 / 4 | 3 / 10 | 1 / 3 | 0 / 1 | 0 / 4 | 7 / 22 |
| 75.0% | 30.0% | 33.3% | 0.0% | 0.0% | 31.8% |

OFFICIAL NCAA BASKETBALL BOX SCORE: * OFFICIAL FIRST HALF *

Date: 03-21-91 Site: Frankfort, Ky.

VISITORS (Last Name, First)

| NO. | BULLITT EAST | Tot FG | | 3-POINT | | FT | FTA | Rebounds | | | PF | TP | A | TO | BLK | S | TIME | |
|------------------------------------|------------------|--------|-----|---------|-----|----|-----|----------|-----|-----|----|----|---|----|-----|---|-------|----|
| | | FG | FGA | FG | FGA | | | OFF | DEF | TOT | | | | | | | | |
| 20 | Thomas, Rhonda | 3 | 6 | 0 | 0 | 2 | 3 | 1 | 2 | 3 | 0 | 8 | 0 | 2 | 0 | 2 | 12:45 | |
| 35 | McKinley, Becky | 0 | 0 | 0 | 0 | 3 | 4 | 1 | 2 | 3 | 2 | 3 | 0 | 1 | 0 | 0 | 9:27 | |
| 44 | Owen, Derhonda | 1 | 2 | 0 | 0 | 0 | 0 | 0 | 1 | 1 | 2 | 2 | 0 | 0 | 0 | 0 | 8:51 | |
| 10 | Jutz, Bree | 1 | 4 | 0 | 1 | 0 | 0 | 2 | 3 | 5 | 1 | 2 | 1 | 4 | 0 | 0 | 16:00 | |
| 23 | Reynolds, Kris. | 0 | 1 | 0 | 0 | 0 | 0 | 1 | 0 | 1 | 2 | 0 | 0 | 1 | 0 | 0 | 16:00 | |
| 31 | Brown, Anita | 1 | 2 | 0 | 0 | 1 | 4 | 1 | 0 | 1 | 0 | 3 | 0 | 0 | 0 | 0 | 10:20 | |
| 12 | Jarvis, Jennifer | 0 | 2 | 0 | 2 | 1 | 2 | 0 | 0 | 0 | 0 | 1 | 2 | 0 | 0 | 0 | 6:37 | |
| TEAM REBOUNDS (INCLUDED IN TOTALS) | | | | | | | | | | 3 | 3 | | | | | | | |
| TOTALS | | 6 | 17 | 0 | 3 | 7 | 13 | 6 | 11 | 17 | 7 | 19 | | 3 | 9 | 0 | 2 | 80 |

TOTAL FG 1st HALF 1/6 16.7% 2nd HALF 5/11 45.5% GAME 6/17 35.3% DEADBALL
 3-POINT FG 1st HALF 0/0 0.0% 2nd HALF 0/3 0.0% GAME 0/3 0.0% REBOUNDS 2
 FREE THROWS 1st HALF 5/8 62.5% 2nd HALF 2/5 40.0% GAME 7/13 53.8%

HOME (Last Name, First)

| NO. | MERCY | Tot FG | | 3-POINT | | FT | FTA | Rebounds | | | PF | TP | A | TO | BLK | S | TIME | |
|------------------------------------|-----------------|--------|-----|---------|-----|----|-----|----------|-----|-----|----|----|---|----|-----|---|-------|----|
| | | FG | FGA | FG | FGA | | | OFF | DEF | TOT | | | | | | | | |
| 30 | Brickley, Amy | 3 | 5 | 0 | 0 | 0 | 0 | 0 | 3 | 3 | 1 | 6 | 2 | 1 | 0 | 1 | 16:00 | |
| 31 | Roalofs, Katie | 1 | 2 | 1 | 1 | 2 | 2 | 1 | 2 | 3 | 0 | 5 | 1 | 0 | 0 | 1 | 16:00 | |
| 55 | Stuckenberg, K. | 2 | 7 | 0 | 0 | 0 | 0 | 1 | 1 | 2 | 2 | 4 | 0 | 1 | 1 | 0 | 8:40 | |
| 21 | Schuetter, Kris | 1 | 2 | 0 | 0 | 0 | 0 | 0 | 0 | 0 | 0 | 2 | 0 | 1 | 0 | 1 | 14:42 | |
| 40 | Jansen, Chris. | 3 | 9 | 2 | 4 | 0 | 0 | 1 | 2 | 3 | 2 | 8 | 3 | 1 | 0 | 2 | 16:00 | |
| 50 | Cave, Missy | 0 | 0 | 0 | 0 | 0 | 0 | 1 | 0 | 1 | 3 | 0 | 0 | 0 | 0 | 0 | 6:07 | |
| 20 | Parker, Angie | 0 | 0 | 0 | 0 | 0 | 0 | 0 | 0 | 0 | 0 | 0 | 0 | 0 | 0 | 0 | 2:31 | |
| TEAM REBOUNDS (INCLUDED IN TOTALS) | | | | | | | | | | 1 | 1 | | | | | | | |
| TOTALS | | 10 | 25 | 3 | 5 | 2 | 2 | 4 | 9 | 13 | 8 | 25 | | 6 | 4 | 1 | 5 | 80 |

TOTAL FG 1st HALF 5/12 41.7% 2nd HALF 5/13 38.5% GAME 10/25 40.0% DEADBALL
 3-POINT FG 1st HALF 3/4 75.0% 2nd HALF 0/1 0.0% GAME 3/5 60.0% REBOUNDS 0
 FREE THROWS 1st HALF 0/0 0.0% 2nd HALF 2/2 100.0% GAME 2/2 100.0%

OFFICIALS: Donald Gilmore, David Hale, J. Dyehouse-Alt
 Technicals: None

SCORE BY PERIODS
 BULLITT EAST 7 12 = 19
 MERCY 13 12 = 25

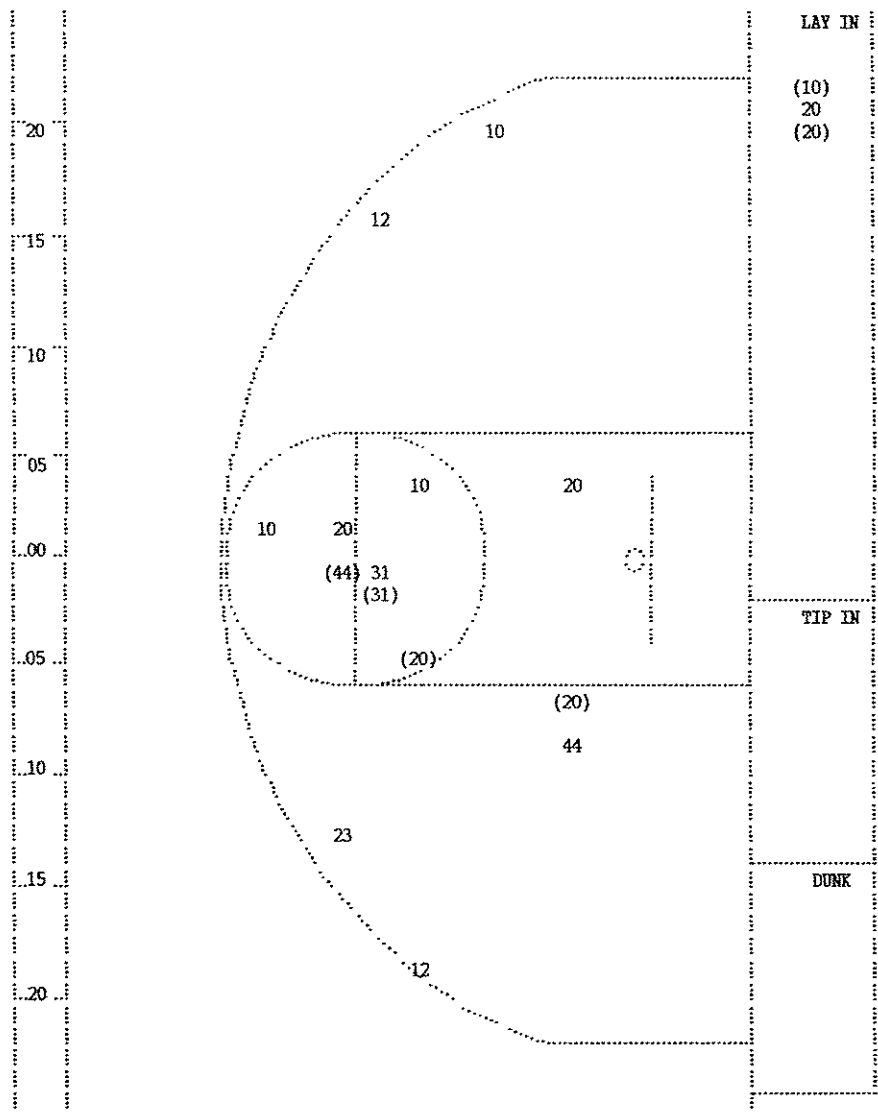
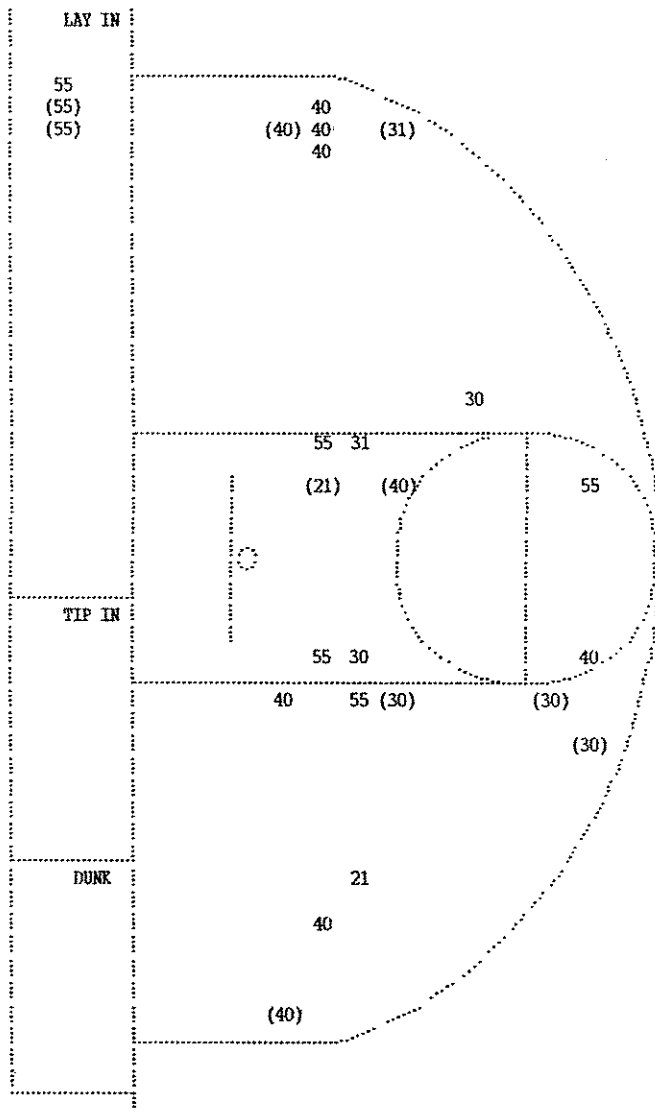
Attendance:

| COMMENTS: | POINTS OFF TURNOVERS | SECOND CHANCE POINTS |
|--------------|----------------------|----------------------|
| BULLITT EAST | 6 MERCY | 5 MERCY |
| | 10 BULLITT EAST | |

| Player | Team | MERCY |
|-----------------|------------|--|
| Schuetter, Kris | Brickley | Amy, Roalofs, Katie, Jansen, Chris., Cave, Missy |
| 1 | 1 | Steal by Schuetter, Kris |
| 1-2 | 50.0% 1-5 | 20.0% 8 ft Left Angle Turnaround by Brickley, Amy |
| 1 | 2 | Steal by Brickley, Amy |
| 1 | 1 | Out-of-Bounds by Brickley, Amy |
| 1 | 2 | Bad Pass by Jansen, Chris. |
| 1 | 3 | Bad Pass by Schuetter, Kris Sub In: Parker, Angie Out: Cave, Missy |
| 1-1 | 100% 2-6 | 33.3% 4 ft Lane Turnaround by Schuetter, Kris |
| 1 | 1 | Assist by Brickley, Amy |
| 1 | 1 | Foul on Brickley, Amy Sub In: Stuckenberg, K. Out: Schuetter, Kris |
| 1-2 | 50.0% 3-8 | 37.5% Follow Layup by Stuckenberg, K. |
| 1 | 2 | Foul on Jansen, Chris. |
| 1 | 3 | Steal by Jansen, Chris. |
| 2-2 | 100% 2-2 | 100% Sub In: Schuetter, Kris Out: Parker, Angie Roalofs, Katie, 2 Free Throws made both |
| 2-5 | 40.0% 4-12 | 33.3% Fast Break Layup by Stuckenberg, K. |
| 1 | 2 | Assist by Jansen, Chris. |
| 1-4 | 25.0% 5-13 | 38.4% 7 ft Lane Jump shot by Jansen, Chris. |
| | | Sub In: Cave, Missy Out: Stuckenberg, K. |
| 1 | 3 | Foul on Cave, Missy |

| Time | Score | BULLITT EAST | Player | Team |
|---------|--------|--|--------|-----------------|
| | | Thomas, Rhonda, McKinley, Becky, Brown, Anita, Jutz, Bree, Reynolds, Kris. | | |
| | | Ball to Lady Chargers | | |
| 2 7:26 | 13-9* | 11 ft Lane Jump shot by Thomas, Rhonda | 1-1 | 100% 1-1 100% |
| 2 7:12 | | Foul on McKinley, Becky | 1 | 1 |
| 2 7:00 | | | | |
| 2 6:58 | | Bad Pass by Thomas, Rhonda | 1 | 1 |
| 2 6:42 | | Foul on Reynolds, Kris. | 1 | 2 |
| 2 6:37 | | Sub In: Jarvis, Jennifer Out: McKinley, Becky | | |
| 2 6:37 | *15-9 | | | |
| 2 6:17 | | | | |
| 2 6:15 | | Dribbling Error on Jutz, Bree | 1 | 2 |
| 2 6:12 | | | | |
| 2 5:53 | | Steal by Thomas, Rhonda | 1 | 1 |
| 2 5:51 | | | | |
| 2 5:38 | 15-11* | 12 ft Lane Jump shot by Brown, Anita | 1-1 | 100% 2-4 50.0% |
| | | Assist by Jarvis, Jennifer | 1 | 1 |
| 2 5:22 | | Steal by Thomas, Rhonda | 2 | 2 |
| 2 5:19 | | | | |
| 2 5:06 | | | | |
| 2 4:34 | 15-13* | Follow Layup by Thomas, Rhonda | 2-3 | 66.6% 3-8 37.5% |
| 2 4:16 | *17-13 | | | |
| 2 3:53 | 17-15* | 6 ft Lane Bank by Thomas, Rhonda | 3-4 | 75.0% 4-9 44.4% |
| | | Assist by Jarvis, Jennifer | 2 | 2 |
| 2 3:53 | | | | |
| 2 3:53 | | Thomas, Rhonda, 1 Free Throw missed | 0-1 | 00.0% 0-1 00.0% |
| 2 3:52 | | Foul on Jutz, Bree | 1 | 3 |
| 2 3:52 | | Sub In: Owen, Derhonda Out: Thomas, Rhonda | | |
| 2 3:25 | *19-15 | | | |
| 2 3:03 | | | | |
| 2 3:02 | 19-16* | Jarvis, Jennifer, 1 Free Throw made | 1-1 | 100% 1-2 50.0% |
| 2 2:59 | | Jarvis, Jennifer, 1 Free Throw missed | 1-2 | 50.0% 1-3 33.3% |
| 2 2:42 | | | | |
| 2 2:40 | | Dribbling Error on Jutz, Bree | 2 | 3 |
| 2 2:35 | | Foul on Reynolds, Kris. | 2 | 4 |
| 2 2:35 | | | | |
| 2 2:35 | *21-16 | | | |
| 2 2:26 | | 10 Second Backcourt Violation on TEAM | 1 | 4 |
| 2 1:52 | 21-18* | 14 ft Lane Jump shot by Owen, Derhonda | 1-1 | 100% 5-10 50.0% |
| | | Assist by Jutz, Bree | 1 | 3 |
| 2 1:43 | *23-18 | | | |
| 2 :54.1 | *25-18 | | | |
| 2 :37.6 | | Sub In: Thomas, Rhonda Out: Brown, Anita | | |
| 2 :37.6 | | | | |
| 2 :04.7 | | Sub In: McKinley, Becky Out: Owen, Derhonda | | |
| 2 :01.1 | | | | |
| 2 :01.1 | 25-19* | McKinley, Becky, 2 Free Throws missed 1st made 2nd | 1-2 | 50.0% 2-5 40.0% |

| MERCY | | | | Time | Score | BULLITT EAST | Player | Team |
|---|-------|------|-------|--|-----------------|--|----------------------------------|-----------------|
| Brickley, Amy, Roalofs, Katie, Stuckenberg, K., Schuetter, Kris, Jansen, Chris. | | | | | | Thomas, Rhonda, McKinley, Becky, Owen, Derhonda, Jutz, Bree, Reynolds, Kris. | | |
| 1-1 | 100% | 1-2 | 50.0% | 15 ft Left Angle Jump shot by Brickley, Amy | 1 7:15 | Ball to Lady Chargers | | |
| 1 | | 1 | | Assist by Jansen, Chris. | 1 6:52 | Dribbling Error on Jutz, Bree | 1 | 1 |
| 1-1 | 100% | 2-4 | 50.0% | 3 pt 21 ft Right Side Jump shot by Roalofs, Katie | 1 6:27 | Foul on McKinley, Becky | 1 | 1 |
| 1 | | 2 | | Assist by Brickley, Amy | 1 6:03 | Traveling Violation on Thomas, Rhonda | 1 | 2 |
| 1 | | 1 | | Steal by Jansen, Chris. | 1 6:02 | | | |
| 1-2 | 50.0% | 3-5 | 60.0% | 3 pt 20 ft Right Base Line Jump shot by Jansen, Chris. | 1 5:51 | | | |
| 2 | | 3 | | Assist by Jansen, Chris. | 1 5:49 | Bad Pass by McKinley, Becky | 1 | 3 |
| | | | | REB: 1 A: 3 BLK: 0 TO: 0 PF: 0 | 1 5:34 | | | |
| | | | | S: 1 FT: 0-0 00.0% FG: 3-5 60.0% | T I M E - O U T | BULLITT EAST No. 1 | REB: 0 A: 0 BLK: 0 TO: 3 PF: 1 | |
| | | | | | | | S: 0 FT: 0-0 00.0% FG: 0-2 00.0% | |
| | | | | REB: 1 A: 3 BLK: 0 TO: 0 PF: 0 | 1 5:34 | | | |
| | | | | S: 1 FT: 0-0 00.0% FG: 3-5 60.0% | T I M E - O U T | BULLITT EAST No. 2 | REB: 0 A: 0 BLK: 0 TO: 3 PF: 1 | |
| | | | | | | | S: 0 FT: 0-0 00.0% FG: 0-2 00.0% | |
| 1 | | 2 | | Steal by Roalofs, Katie | 1 5:23 | | | |
| 1 | | 1 | | Foul on Stuckenberg, K. | 1 5:23 | Bad Pass by Jutz, Bree | 2 | 4 |
| 1 | | 1 | | Other Stuckenberg, K. | 1 5:00 | | | |
| 1 | | 2 | | Foul on Jansen, Chris. | 1 5:00 | | | |
| 2-3 | 66.6% | 4-6 | 66.6% | 3 pt 20 ft Left Base Line Jump shot by Jansen, Chris. | 1 4:43 | 8-2* Thomas, Rhonda, 2 Free Throws made both | 2-2 | 100% 2-2 100% |
| 1 | | 4 | | Assist by Roalofs, Katie | 1 4:20 | *11-2 | | |
| | | | | | 1 3:05 | Foul on Owen, Derhonda | 1 | 2 |
| | | | | | 1 2:57 | Foul on Owen, Derhonda | 2 | 3 |
| | | | | | 1 2:57 | Sub In: Brown, Anita Out: Owen, Derhonda | | |
| 2 | | 3 | | Foul on Stuckenberg, K. | 1 2:37 | | | |
| | | | | Sub In: Cave, Missy Out: Stuckenberg, K. | 1 2:36 | | | |
| 1 | | 4 | | Foul on Cave, Missy | 1 2:36 | Brown, Anita, 2 Free Throws missed both | 0-2 | 00.0% 2-4 50.0% |
| | | | | | 1 2:35 | | | |
| | | | | | 1 2:35 | 11-4* McKinley, Becky, 2 Free Throws made both | 2-2 | 100% 4-6 66.6% |
| | | | | | 1 2:13 | Turnover by Jutz, Bree | 3 | 5 |
| 2-2 | 100% | 5-11 | 45.4% | 18 ft Left Angle Jump shot by Brickley, Amy | 1 1:31 | 11-6* Driving Layup by Jutz, Bree | 1-2 | 50.0% 1-5 20.0% |
| | | | | | 1 1:04 | *13-6 | | |
| | | | | | 1 :39.1 | Closely Guarded Violation on Reynolds, Kris. | 1 | 6 |
| | | | | | 1 :01.5 | | | |
| D-1 | Pot-1 | D-4 | Tot-4 | Rebound by Brickley, Amy | 1 :01.5 | 13-7* Brown, Anita, 2 Free Throws made 1st missed 2nd | 1-4 | 25.0% 5-8 62.5% |
| | | | | | 1 :00.1 | | | |



| MERCY | | | | | |
|-----------------|--------|----------|------------|------------|---------|
| Player | | Player | Player | | |
| 30 - Brickley, | 3 / 5 | 60.0% | | | |
| 31 - Roalofs, K | 1 / 2 | 50.0% | | | |
| 55 - Stuckenber | 2 / 7 | 28.5% | | | |
| 21 - Schuetter, | 1 / 2 | 50.0% | | | |
| 40 - Jansen, Ch | 3 / 9 | 33.3% | | | |
| Layups | 1-9 Ft | 10-15 Ft | Over 15 Ft | 3 Pointers | Total |
| 2 / 3 | 3 / 9 | 1 / 3 | 1 / 5 | 3 / 5 | 10 / 25 |
| 66.7% | 33.3% | 33.3% | 20.0% | 60.0% | 40.0% |

| BULLITT EAST | | | | | |
|------------------|--------|----------|-----------------|------------|--------|
| Player | | Player | Player | | |
| 20 - Thomas, Rh | 3 / 6 | 50.0% | 31 - Brown, Ani | 1 / 2 | 50.0% |
| 44 - Owen, Derh | 1 / 2 | 50.0% | | | |
| 10 - Jutz, Bree | 1 / 4 | 25.0% | | | |
| 23 - Reynolds, | 0 / 1 | 0.0% | | | |
| 12 - Jarvis, Jen | 0 / 2 | 0.0% | | | |
| Layups | 1-9 Ft | 10-15 Ft | Over 15 Ft | 3 Pointers | Total |
| 2 / 3 | 1 / 3 | 3 / 6 | 0 / 2 | 0 / 3 | 6 / 17 |
| 66.7% | 33.3% | 50.0% | 0.0% | 0.0% | 35.3% |